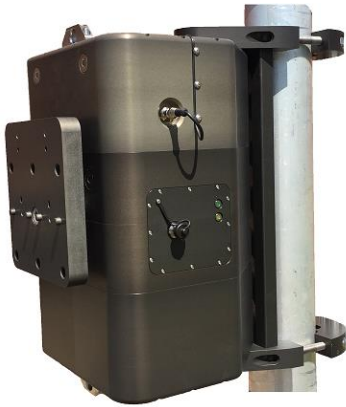


# LinkAlign-60EBP-30

AUTO LINK MAINTENANCE FOR MICROWAVE OR MILLIMETER WAVE LoS



The LinkAlign-60EBP-30 is a Power Over Ethernet (PoE) antenna positioner designed from the ground up to point and automatically peak directional side arm mount antennas for Microwave frequencies between 11-29GHz as well as Millimeter wave bands between 30-90GHz (E-Band) links.

Millimeter wave radios specifically in the 60GHz to 80GHz range have very narrow beam widths which require very precise pointing and stable masts to maintain a link. Often these links come out of alignment or become less optimized due to thermal expansion of the tower, wind events, or other environmental conditions. The LinkAlign-60EBP-30 corrects for these disturbances to maintain the highest Quality of Service available without the down time and reoccurring cost due to manual realignment. Once

aligned, our software will maintain your link automatically based on an RSSI threshold setting or can be manually peaked on demand from anywhere on your network.

The LinkAlign-60EBP-30 is typically paired with 3 to 4 foot side arm mount antennas, payloads up to 300 lbs (136.07 kg), and offers +/-30° of azimuth and elevation range. Optional GPS heading unit and antenna adapter brackets are available upon request. Download the Interface Control Drawing (ICDN900498) for details.

## TECHNICAL SPECIFICATIONS - LinkAlign-60EBP-30

TECHNICAL SPECIFICATIONS - LinkAlign-60EBP-30	
<b>Power</b>	
Power Over Ethernet (PoE)	50-57Vdc, 4 Pair PoE, PoH (Indoor Rated 54Vdc Supply Included)
Standby / Maximum Power Draw	<16W / 95W
Optional DC Input	20-60V
<b>External Material / Finish</b>	Aluminum with stainless steel hardware / Hard coat anodize
<b>Positioner Travel (Az/EI)</b>	60° (+/-30°)
<b>Positioner Drive Rate (Az/EI)</b>	Variable, up to 0.47°/sec no load
<b>Temperature</b>	
Operational <sup>(1)</sup>	-18 to 140°F (-28 to 60°C)
Survival	-40 to 158°F (-40 to 70°C)
<b>Feedback Resolution</b>	0.01°
<b>Backlash (Az / EI)</b>	less than 0.03° in both axes
<b>Torque</b>	
Operational (EI) <sup>(2)</sup>	150 ft-lbs (203.3 Nm)
Survival (Az/EI)	1500 ft-lbs (2033.7 Nm)
<b>Payload</b>	300 lbs (136.07 kg)
<b>Dimensions</b>	Height: 20.58" (52.3 cm), Width: 13.85" (35.2 cm), Depth <sup>(3)</sup> : 16.69" (42.4 cm)
<b>Weight</b>	100 lbs (45.4 kg)
<b>Mounting Interface</b>	Mounts to masts O.D. ranging from 3 - 4.5"
<b>Antenna Mount Options</b>	Qty six 5/8-11 threaded holes for side arm mount antennas (See ICD for details)
<b>Communication Interface</b>	
User Interfaces	Web based hosted internal to unit or Nextmove proprietary command protocol
Ethernet	10/100 Ethernet

<sup>(1)</sup> Minimum temperature specified at no load

Specifications subject to change without notice

<sup>(2)</sup> Maximum operating torque may be reduced at temperatures below -25°C and/or with use of peripheral devices

<sup>(3)</sup> Depth measured from center of a 4.5 in O.D. mast