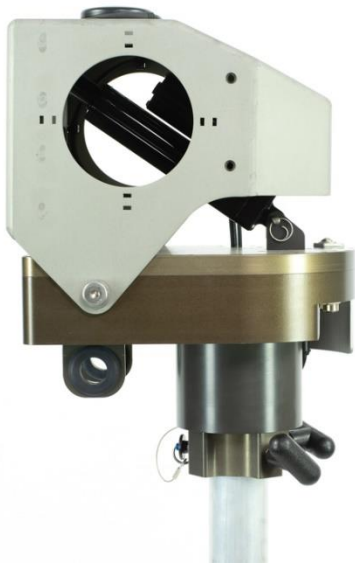


LinkAlign-360RPT-10

AUTO ACQUISITION ANTENNA POSITIONER FOR MICROWAVE LINE OF SIGHT



The LinkAlign-360RPT-10 is a Power Over Ethernet (PoE) antenna positioner designed from the ground up to automatically point and peak directional antennas for microwave line of sight communications.

The built in GPS and digital compass with full featured web based user interface provides rapid and accurate antenna pointing. The user interface includes a stored locations database that allows easy recall of known target locations followed by a final auto peak using radio signal strength.

The LinkAlign-360RPT-10 is typically paired with 1-2 ft antennas, payloads up to 45 lbs (20.4 kg), and offers 360° of azimuth and +/-10° of elevation range. Download the Interface Control Drawing (ICDN900147) for more details.

Optional tri-pods, table top mount, radio adapter brackets, antenna adapter brackets, polarization axis and transit cases are available upon request.

TECHNICAL SPECIFICATIONS - LinkAlign-360RPT-10

Power	
Power Over Ethernet (PoE)	50-57Vdc, 4 Pair PoE, Passive (Indoor Rated 50Vdc Supply Included)
Standby / Maximum Power Draw	<10W / 60W
Optional DC Input	20-60V
External Material / Finish	Aluminum with stainless steel hardware / Hard coat anodize
Positioner Travel	
Azimuth	400° (+/-200°)
Elevation	20° (+/-10°)
Positioner Drive Rate	
Azimuth	Variable, up to 4.5°/sec max load
Elevation	Variable, up to 2°/sec max load
Temperature	
Operational ⁽¹⁾	3° to 140°F (-16° to 60°C)
Survival	-40° to 158°F (-40° to 70°C)
Feedback Resolution	0.1°
Backlash (Az/El)	less than 0.25° / less than 1°
Torque	
Operational (El) ⁽²⁾	20 ft-lbs (27.1 Nm)
Survival (Az/El)	50 ft-lbs / 100 ft-lbs (67.8 Nm / 135.6 Nm)
Payload	45 lbs (20.4 kg)
Dimensions	Height: 15.22" (38.7 cm), Width: 8.69" (22.1 cm), Depth: 10.63" (27.0 cm)
Weight	17.5 lbs (7.9 kg)
Mounting Interface	Clamps standard to a 2" dia mast (5 cm). Optional table top mount available
Antenna Mount Options	1/4-20 thumb nuts (tool-less) and 1/4-20 threaded holes (See ICD for details)
Communication Interface	
User Interfaces	Web based hosted internal to unit or Nextmove proprietary command protocol
Ethernet	10/100 Ethernet
Optional Serial	RS-232

⁽¹⁾ Minimum temperature specified at no load

⁽²⁾ Maximum operating torque may be reduced at temperatures below -13°C and/or with use of peripheral devices

Specifications subject to change without notice